

## Slim Duct Type

### Functional design

Only 210 mm in height for greater application flexibility.

4-step static pressure setup.

Concealed installation within a ceiling void.

Fresh air intake available.

### Slim & quiet

Perfect comfort throughout the room.

Can be used with any style of air diffuser.

Quiet, powerful operation.

**MMD-AP\*\*\*4SPH**

## Technical specifications

Model name		MMU-	AP0074SPH	AP0094SPH	AP0124SPH	AP0154SPH	AP0184SPH
Cooling/Heating capacity*1		(kW)	2.2/2.5	2.8/3.2	3.6/4.0	4.5/5.0	5.6/6.3
Electrical characteristics	Power supply	1 phase 50Hz 230V (220-240V) (Separate power supply for indoor units is required.)					
	Power consumption 50 Hz/60 Hz	(kW)	0.039		0.043	0.045	0.054
External dimensions	Height	(mm)	210				
	Width	(mm)	845				
	Depth	(mm)	645				
Total weight		(kg)	22			23	
Fan unit	Standard air flow (High/Mid/Low)	(m <sup>3</sup> /h)	540/470/400		600/520/450	690/600/520	780/680/580
	Motor output	(W)	60				
	External static pressure (factory setting)	(Pa)	6 (Factory setting)-16-31-46, 4steps		5 (Factory setting)-15-30-45, 4steps		4 (Factory setting) -14-29-44, 4steps
Connecting pipe	Gas side	(mm)	ø9.5			ø12.7	
	Liquid side	(mm)	ø6.4				
	Drain port	(nominal dia.)	25 (Polyvinyl chloride tube)				
Sound pressure level*2 (High/Med./Low)	Under air inlet	(dB(A))	36/33/30		38/35/32	39/36/33	40/38/36
	Back air inlet	(dB(A))	28/26/24		29/27/25	32/30/28	33/31/29

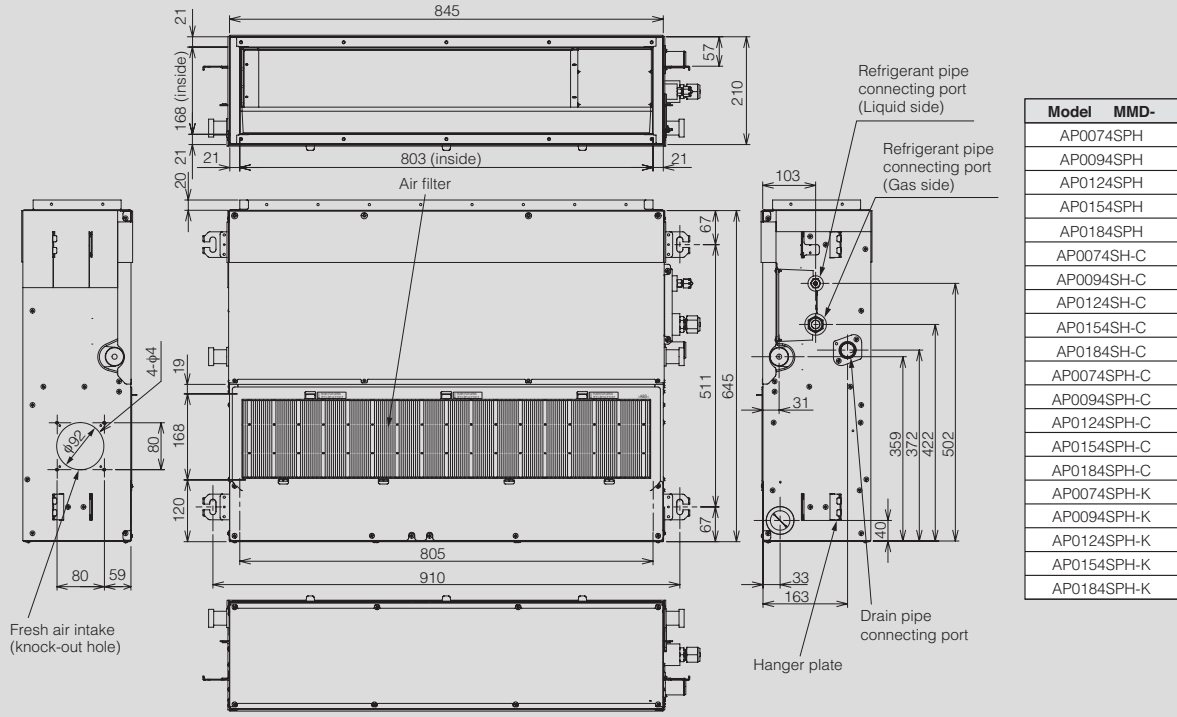
\*1 The cooling capacities and electrical characteristics are measured under the conditions specified by JIS B 8615 based on the reference piping. The reference piping consists of 5 m of main piping and 2.5 m of branch piping connected with 0 meter height.

\*2 The sound level are measured in an anechoic chamber in accordance with JIS B 8616.

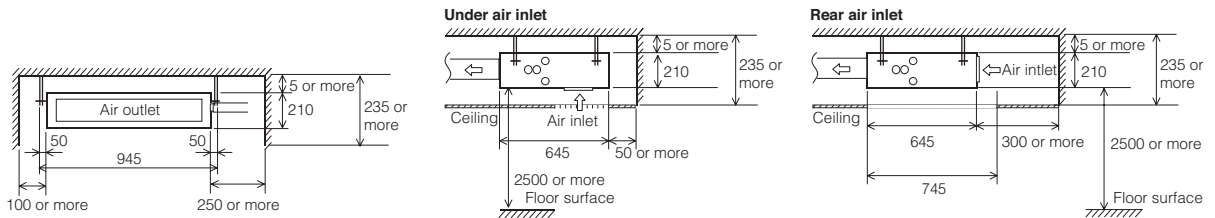
Normally, the values measured in the actual operating environment become larger than the indicated values due to the effects of external sound.

Note : Rated conditions Cooling : Indoor air temperature 27°C DB/19°C WB, Outdoor air temperature 35°C DB  
Heating : Indoor air temperature 20°C DB, Outdoor air temperature 7°C DB/6°C WB

MMD-AP0074SPH to AP0184SPH\*



● Space required for installation and servicing



(Unit: mm)

\* (SPH-C) China market only, (SH-C) Drain pump connection not possible/China market only

Options

